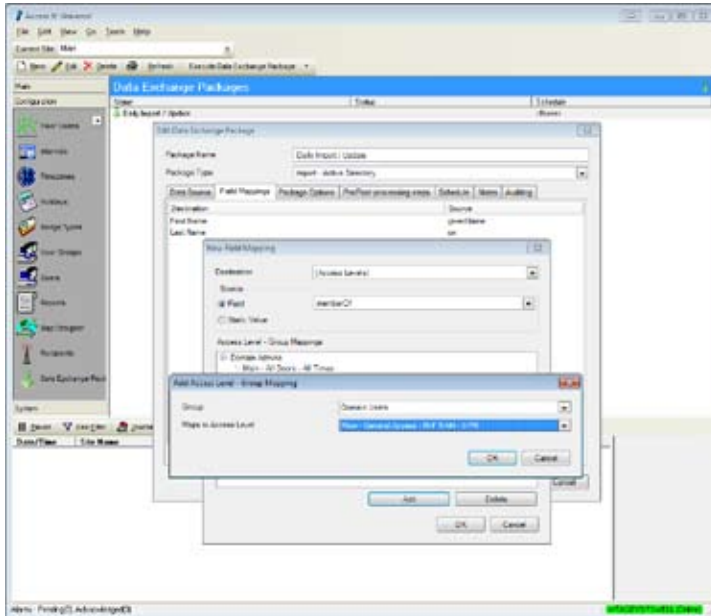


RS2 Technologies

a family of access management hardware solutions

Access It!® Universal.NET Data Exchange Option



The Data Exchange option imports card holder data from various third party sources.

The Data Exchange option includes these features:

- Microsoft Active Directory synchronization
- Imports data from multiple sources and formats
- Enables single point of employee data entry
- Custom field mapping for maximum flexibility
- Data manipulation for proper formatting
- Rule based field and record operations
- Automatic source data maintenance
- Scheduled or manual data imports
- Automatic updating of field panels

For more information, please contact your local Authorized RS2 Dealer, whose contact information appears below:

RS2 Technologies has developed a family of access management software options that can be combined to meet a wide variety of applications. All options are seamlessly integrated with Access It!® Universal.NET for maximum flexibility and ease of use.

Data Exchange Option

The Data Exchange option is a flexible, programmable card holder and card data import and maintenance utility. Data Exchange Packages can be configured to import from multiple data sources such as Microsoft Active Directory, Human Resource systems and Student Management systems. Data import and synchronization can either be instantaneous using Active Directory or done on a scheduled basis from other data sources.

Employee, student or contractor data can now be controlled from a single point of data entry and synchronized with Access It!® Universal.NET, making security updates fast and seamless. When new employees are hired or leave the company, their access to the facility can be updated based upon their employment status, department or any other desired information. Data Exchange option is a system-wide (i.e., server-based, not client-based) option, so only one license is needed per system.

Technical Specifications

- Microsoft Active Directory synchronization (using DirSync)
- Microsoft Access, Microsoft Excel, Microsoft SQL Server, ODBC and Text File support
- Unlimited number of Data Exchange Packages
- Unlimited number of data field mappings
- Input transformation for partial data field importing
- Output transformation to force proper case and masking
- Card and Access Level modification rules
- Package logging for simple troubleshooting and auditing
- Pre and post package operations for data source file maintenance
- Schedule based importing and updating using system timezones/intervals
- Field panels are immediately updated with current data



RS2 Technologies, LLC • 400 Fisher Street, Suite G • Munster, IN 46321 • 877.682.3532

